

# Dress Rehearsal & Concert Info

## Winter 2012



### DRESS REHEARSAL

**Saturday, February 11, 2012**

Orchestra Hall, 1111 Nicollet Mall, Minneapolis

**Rehearsal times for each orchestra:**

**String Orchestra:** 8:30 am to 9:50 am

**Philharmonic:** 10:00 am to 11:20 am

**Repertory:** 11:30 am to 1:00 pm

**Symphony:** 1:10 pm to 3:00 pm

**Please check-in backstage 15 minutes early.**

### WINTER CONCERT

**Sunday, February 12, 2012, 6:30pm**

Orchestra Hall, 1111 Nicollet Mall, Minneapolis

**Check-in times, backstage at Orchestra Hall:**

**String:** 5:50 pm

**Philharmonic:** 6:00 pm

**Repertory & Symphony:** 6:10 pm

**Concert Order:**

String, Philharmonic, *Intermission*, Repertory, Symphony

**Note: Concert Dress is required for the concert only, NOT the dress rehearsal!**

### Concert Dress Guidelines:

Please arrive at Orchestra Hall wearing your concert attire (on concert day only, not for dress rehearsal).

**New this season: All orchestras, including String Orchestra, have the same dress guidelines. The MYS concert dress guidelines for all orchestras are listed below:**



**Girls (all orchestras):** Black floor-length dress or black floor-length skirt or pants with black blouse or top with elbow length or long sleeves (no short sleeves please!). Black closed-toed dress shoes and black hose or tights.

**Boys (all orchestras):** Black or dark navy suit or tuxedo. White shirt and black bow tie. Black dress shoes, dark socks.

**Please do not wear the following items at a MYS concert:** Tight-fitting skirts, side slits on skirts, jumpers, plunging necklines, backless dresses, sleeveless or strapless dresses or blouses, jeans, suspenders, leggings, dangling earrings, glitter, sequins, bracelets, extra large hair bows, open-toed or tennis shoes.

### Tickets:

Tickets are only available through the Orchestra Hall Box Office by calling 612-371-5656 or by visiting the Orchestra Hall Box Office web site, [www.minnesotaorchestra.org/boxoffice](http://www.minnesotaorchestra.org/boxoffice), or in person. All seats are reserved. Adult ticket prices range from \$13.25-\$22.25. Student discounts and group discounts are available by contacting the Orchestra Hall Box Office. *The Box Office will be open at 10:00 am on the day of the dress rehearsal and open the day of the concert.* Purchase tickets in advance to save money. **Public and private music teachers are entitled to one complimentary ticket to each MYS concert.** Please check with your teacher to make sure they know about this deal! All music teacher tickets must be reserved through the Orchestra Hall Box Office by calling 612-371-5656, or in person. If you have any questions call the MYS Office at 651-699-5811.

## What to bring to Orchestra Hall:

Remember your instrument and music! It is your responsibility as a musician to have extra strings, mutes, reeds, or any other miscellaneous items for your instrument. **Music stands will be provided by Orchestra Hall.** Photocopied music is not allowed on stage, unless it is rental music, or has been cleared by your librarian. Students are responsible for talking with their stand partners to be sure one of them has an original part for each piece that is being performed. **Please talk with your librarian by February 4 if you have any questions.**

## Arriving/Parking at Orchestra Hall:

Students should be dropped off at the Stage Door Entrance of Orchestra Hall (on Marquette Ave, between 11th and 12th Streets) for the dress rehearsal and the concert. Students will be checked in by MYS staff and volunteers and directed to a holding room for their orchestra. Please note: the Orchestra Hall lobby will be open to parents at dress rehearsal, but no one is permitted in the hall. Only performers, appointed volunteers and staff will be allowed backstage. Parking is available in a number of ramps that are located close to Orchestra Hall. For more information on the location or for directions, please visit the Minnesota Orchestra website: [http://www.minnesotaorchestra.org/orchestra\\_hall](http://www.minnesotaorchestra.org/orchestra_hall).

## During the Performance:

All MYS students are required to sit with their orchestra and conductor during the concert.

**LEAVING EARLY:** *If your child is unable to stay for the entire concert, you must notify the MYS office by Friday, February 10.* Students will not be allowed to leave the concert without giving prior notification. Volunteers will accompany students at all times during the concert. Students are expected to listen quietly and respectfully throughout the performance of each orchestra.

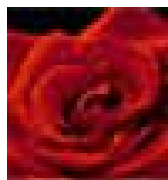


### Electronic Devices Prohibited!

Students must leave all electronic devices in their cases backstage or with a parent during the dress rehearsal and the concert. This includes cell phones, iPods, gaming devices, etc. *If a student is caught using a cell phone or other electronic device while sitting in the hall during the concert it will be confiscated, and must be picked up at the MYS office during working hours.*

## After the Performance:

*Please plan a meeting place for your family, as the lobby will be crowded following the conclusion of the concert!* Students will be exiting Orchestra Hall through the Stage Door Entrance after their dress rehearsal. On the day of the concert, most students will exit through the lobby of Orchestra Hall. Symphony students, tuba, cello, and bass players may retrieve their instrument cases backstage and exit either the Stage Door or through the front of the house.



### Flowers & Truffles for sale (just in time for Valentine's Day)!

A variety of flower arrangements and truffle assortments will be available to purchase at Orchestra Hall the day of the concert. Gaden of Eva will be providing flower bouquets, and Mina Fisher (former MN Orchestra cellist turned chocolatier!) will be selling her artisan truffles. Pre-order forms for flowers and truffles are available at the MYS info table at rehearsals. Orders will be available to pick up in the Orchestra Hall lobby on the day of the concert (**NOTE: the flower stand will only be open until the end of intermission**).